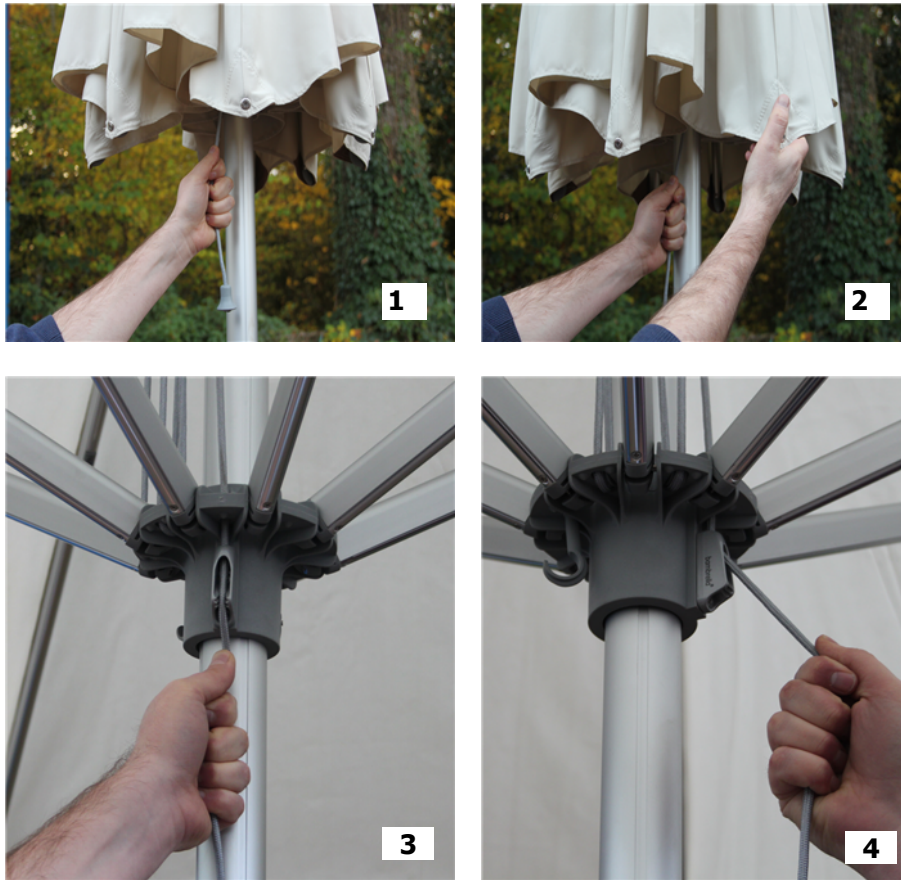


HURRICANE OPENING INSTRUCTIONS



1. REMOVE PARASOL FROM OUTER PACKAGING.
2. PLACE UPRIGHT IN DESIRED POSITION (TABLE OR PARASOL BASE).
3. GRASP ROPE, AND PULL GENTLY DOWNWARDS UNTIL RESISTANCE IS FELT. (FIG. 1) **DO NOT PULL TOO HARD OR DAMAGE MAY OCCUR.**
4. IF THE PARASOL IS DIFFICULT TO OPEN, GENTLY PULL ALL THE RIB ENDS AWAY FROM THE POLE WHILE PULLING GENTLY ON THE ROPE UNTIL THE RIBS BECOME FREE (FIG. 2)
5. OPEN THE PARASOL FULLY, UNTIL THE COVER IS TIGHT, AND LOCK THE ROPE INTO THE CLEAT BY MOVING IT CLOSE TO THE POLE (FIG 3).
6. TO LOWER THE PARASOL, GRASP THE ROPE AND MOVE IT AWAY FROM THE POLE. (FIG. 4). THIS WILL RELEASE THE ROPE FROM THE CLEAT. GENTLY LOWER THE PARASOL UNTIL CLOSED DOWN.
7. ONCE THE CANOPY IS DOWN, REMOVE THE FOLDS OF THE CANOPY FROM BETWEEN THE RIBS TO AVOID CHAFING ON THE COVER AND USE AN UMBRELLA TIE TO SECURE THE CANOPY.